



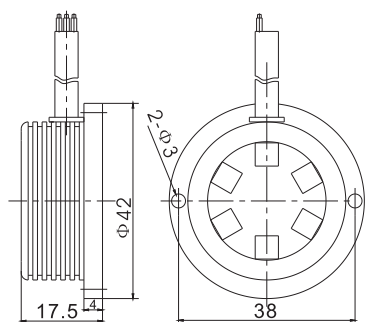
W. Schmid AG

LED-Technology
the visible difference

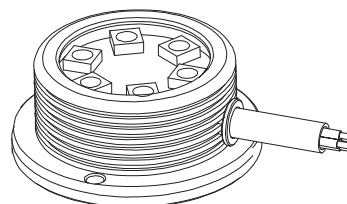
Surface mounted LED indicator ABL42



ABL42, 24 VDC



2 mounting holes $\varnothing=2,8\text{mm}$,
distance: 38mm



lateral cable outlet

Specifications:

Description:	Surface mounted flat LED indicator ABL42, 42mm
Dimensions:	$\varnothing=42\text{mm}$, $H=17.5\text{mm}$
Supply voltage:	24 VDC
Power consumption:	1.5W
Viewing angle:	120°
Degree of protection:	IP 65
Class of protection:	III
Operating temperature:	-25 up to +50°C
Material:	Colourless anodized aluminium, silicone sealing
Weight:	0.05kg
Connection:	Cable, length: 0.3-0.4m
Available ill. colours:	white, warm white, red, yellow, green, blue, orange, RGB
Applications:	Pilot light, access control, machine illumination, wall lamp, floor lamp, alarm indicator etc.