



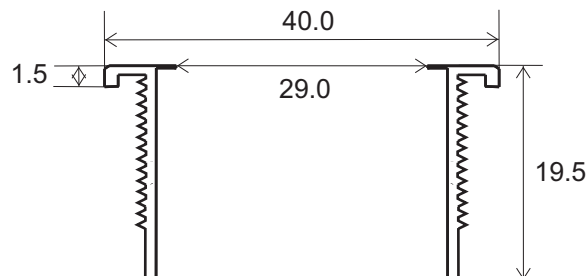
**W. Schmid AG**

LED-Technology  
the visible difference

## LED - Indicator SL 40



SL 40 LED - Indicator, 5 - 380 VDC/ VAC



Nut M35x1 / AF 38 mm  
O-ring 1.6mm

- 35.5 mm mounting hole
- 28 mm colored or white opaque epoxy lens
- colorless or black anodized aluminum housing
- gas- and water proof
- vandal proof and acid resistant
- shock- and vibration resistant
- long life-time >50'000 hours
- variants of 5 VDC to 380 VAC available
- 115/230 VAC variants with integrated transformer or capacitor
- faston-, cable- or screw connections available
- lettering on illuminated surface possible
- for use in the chemical industry, machine building, railways, mining or access control

## Technical specifications

### Color

red  
yellow  
green  
orange  
blue  
white

### Wavelength

645nm  
583nm  
575nm  
640nm  
470nm  
X = 0.29 / Y = 0.31

### Current consumption

40 mA (12/24 VDC), 10 mA (115 VDC/VAC), 20 mA (230 VAC), 4 mA (380 VAC)

### Operating and storage temperature

-40 °C to +85°C

## Standard options

### Series

SL = LED Indicator flat

### Diameter

40 = 40mm

### Terminals

F = faston terminals 2,8 x 0,8mm

S = screw connectors

C = cable connection 1,2m

### Color code

1 = red	6 = blue
2 = yellow	7 = white
3 = green	8 = red-green
4 = orange	136 = red-green-blue

### Lens

C = colored

W = white opaque

### Voltages

D = VDC 5 - 115 VDC

A = VAC 5 - 380 VAC, 115/230 VAC also available with T = transformer

### Housing

A = standard aluminum, hard anodized, colorless

B = aluminum, anodized black

N = nickel plated aluminum

C = chrome plated aluminum

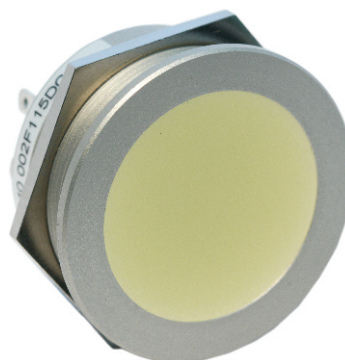
### Nut

M = metal nut, nickel plated brass

### Ordering example

SL40 F2 C24 DAM

LED Indicator SL40, 40 mm diameter,  
faston connector 2,8 x 0,8mm, yellow LED,  
yellow colored lens, 24 VDC,  
aluminum standard housing,  
metal nut M35x1, O-ring NBR 70



### Upon request

- other voltages
- common anode
- other connections
- flashing LED
- other housing colors
- lettering on illuminated surface

## Manufacturer

W. Schmid AG  
Dorfstrasse 23  
5442 Fislisbach  
Switzerland

Tel: +41 56 470 00 77 Fax: +41 56 470 00 74

E-mail: [sales@led-lamps.ch](mailto:sales@led-lamps.ch) URL: <http://www.led-lamps.ch>